



©Judith Hoffman Corwin

WISH YOU WERE HERE: FIBER ART POSTCARDS



© Kathie Schroeder

Tohono Chul Park, Tucson, Arizona
September 10-November 16, 2009

Entry Form Deadline: July 31, 2009 -- Postcard Mailing Dates: July 1-July 31, 2009

Tohono Chul Park (TCP), an Arizona State Treasure, is the Southwest's center where nature, art, and culture connect. The 49-acre non-profit desert preserve in northwest Tucson will celebrate its 25th Anniversary in 2010. TCP has an active arts and cultural program and offers changing exhibitions in an historic Exhibit House open daily to the public, and also offers trails and gardens, museum shops, a retail greenhouse, education complex and tea room. TCP attracts over 150,000 visitors annually and provides outreach programs to schools and communities across Tucson. www.tohonochulpark.org.

EXHIBIT THEME: Have you ever traveled to Arizona, in reality or in your imagination? In a similar manner as tourist postcards, fiber art postcards in *Wish You Were Here* will document real or imagined places, trips, experiences or events in Arizona. Postcards may be constructed using any of a variety of fiber art techniques such as quilting, weaving, embroidery, and handmade paper. They will be exhibited in Tohono Chul Park's Gallery from September 10-November 16, 2009. A free reception for artists will be held on Thursday, September 10, 5:30-7:30pm, in conjunction with TCP's Day of the Dead exhibition, showing in the adjoining Exhibit Hall.

This is our second *Wish You Were Here* exhibit. The response to our first version in 2006 was very enthusiastic; 215 postcards traveled to our gallery from all over Arizona, the United States and Canada, and Australia and Belgium. Subjects included personal memories of Arizona visits; images of desert flowers, cactus, and critters; regional dishes, native peoples, special places...you name it. We displayed every postcard received; many of them clipped onto monofilament stretched across the gallery so that both sides were visible. Our visitors were enchanted with the display and the creativity expressed in each individual postcard. We appreciated the distances that the postcards had traveled, naked and vulnerable, through the mail. A catalog showing all entries was printed and sold. Images on this Entry Form are from the 2006 exhibit.

ELIGIBILITY: *Wish You Were Here* is a non-juried exhibit of one-of-a-kind fiber art postcards open to artists working with fiber-based materials living anywhere in the world. Each participant may send one postcard to the exhibit. See complete requirements below. Entry fee: \$5 (international participants: contact us by email for fee instructions).

Postcard artists give TCP permission to photograph or digitally scan their postcards for publicity purposes, for viewing on the TCP website, and for possible inclusion in a printed catalogue to be sold or for other commercial or promotional purposes related to the exhibit.

GENERAL REQUIREMENTS:

- Postcard should be 4" x 6"
- Postcards must be postmarked from July 1-July 31, 2009, sent without an envelope
- Entry forms and fees, mailed separately, are due by July 31, 2009
- SASE must be included with entry form. Postcards will not be returned without SASE and proper postage
- Mail postcard to:
"Wish You Were Here"
Tohono Chul Park
7366 N. Paseo del Norte
Tucson AZ 85704

Secure proper postage before mailing your postcard. Fiber art postcards may require extra postage due to weight and could need to be hand-cancelled due to bulkiness. Check current postage rates (as they were due to increase in May 2009). To be sure, ask your local post office for advice. Artist assumes all risks of mailing cards through the postal service, including the possibility of damage or loss. TCP will refuse submissions delivered with postage due.

NOTE: Although there is an element of risk in mailing the postcards as they could be damaged or lost in transit, it is interesting to view the postmarks of their originating post offices. For our 2006 version of this exhibit, every expected postcard arrived, with only a few incidences of very minor damage.

INSTRUCTIONS: The postcard design must be created by the artist who submitted it. While a design on the fiber art postcard may be inspired by real postcard, it should not be a copy or variation of an original design by another artist working in any medium or the product of a class or workshop in which another artist provided substantial direction.

1. **On the decorated side of the card**, you can document real or imagined places, trips, experiences or events in Arizona using any fiber art techniques. Imagery on the decorated side of the postcard may be representational or abstract, and be vertical or horizontal in orientation. Media should be predominantly fiber-based, such as thread, yarn, cloth, handmade paper, and other fiber and fiber-like materials that the artist has created or altered using various surface design techniques. Suggested techniques include hand and machine stitching, quilting, and flat surface embellishments such as sequins, paint, and ink. Please avoid using three-dimensional objects and surface treatments (such as beads and found objects) that could be damaged in the mail. Handmade paper created by the artist is appropriate, but the use of commercial or purchased paper is limited to the back of postcard only. Contact us by email if you have questions about this.

2. **On the message side of the card**, write to us about the event or place depicted on the decorative side. You may use any of the techniques used for the decorated side, or you may choose to use commercial or purchased heavyweight paper. Be sure to include your return address someplace, to secure postage on it, sign your name on it and date it.

To view examples of fiber art postcards made by other artists, see *Quilting Arts Magazine* (Summer 2004) or *Quilters Newsletter Magazine* (December 2005) *Fiberarts* (Apr/May 2006): http://www.fiberarts.com/article_archive/genres/trading_cards.pdf, <http://debrichardson.com/blog/?p=232>, <http://www.art2mail.com/faq.php>, <http://www.postmarkdart.com/>. A book that may be helpful is *Positively Postcards: Quilted Keepsakes to Save or Send* by Bonnie Sabel and Louis-Philippe O'Donnell (That Patchwork Place).

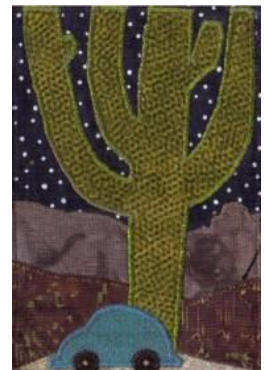
SALES: Postcards may be offered for sale or not. Indicate sale price on the Entry Form. TCP retains 40% commission on sales, however, if a postcard's price is less than \$25, the artist agrees to relinquish any commission to TCP; if price is \$25 or greater, artists may choose to receive a check for their share at the close of the exhibit or to donate their share to TCP.

DISPLAY: TCP's exhibit staff will make every attempt to display all the postcards received. Depending on the number received, space limitations may not allow them to show all of the postcards openly in the gallery, in which case some might be presented in clear pocket pages in notebooks which visitors can browse. TCP is investigating the possibility of a printed catalog and reproducing a selection of the postcards for sale. We reserve the right to not show works that do not adhere to the exhibit's stated theme or requirements, are of poor quality or craftsmanship, or are deemed inappropriate or offensive.

For questions or more information, contact the curator* for *Wish You Were Here*,

*Peggy Hazard, Assistant Exhibit Curator (Mondays-Thursdays) 520-742-6455x217 or peggyhazard@tohonochulpark.org, or Vicki Donkersley, Curator of Exhibits (Tuesdays-Fridays) 520-742-6455 x218 or vickidonkersley@tohonochulpark.org

Additional copies of the Entry Form are available in pdf format at <http://www.tohonochulpark.org/upcoming.html>



©Kathleen Sharp

ENTRY FORM

Wish You Were Here: Fiber Art Postcards
Exhibit dates: September 10-November 16, 2009

Postmark deadline: July 31, 2009
\$5 Entry Fee (check made to "Tohono Chul Park")

Please print clearly:

Name: _____

Street: _____

City, State, Zip/Postal Code: _____

Country (if outside USA) _____

Phone/s: _____ Email: _____

TELL US ABOUT YOUR POSTCARD

Title of the Piece: _____

Media and techniques used: _____

Describe your inspiration for the postcard's theme: _____

Is postcard for sale? _____ If yes, indicate sale price _____ (price must include TCP's 40% commission)

If postcard sale price is less than \$25, artist agrees to relinquish his/her commission to TCP.

If postcard sale price is \$25 or greater, initial one (required):

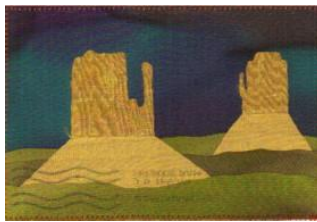
_____ 1. artist will receive a check for his/her share at the exhibit's close, or

_____ 2. artist will donate his/her share to TCP

If you are not a resident of Arizona, have you visited the state? When and where?

What fiber art organizations do you belong to? _____

Where did you hear about this exhibit? _____



© Linda Cass

Permission: By entering a fiber art postcard in the *Wish You Were Here: Fiber Art Postcard* exhibit, I hereby grant Tohono Chul Park, its representatives, agents and assigns permission to display my submitted fiber art postcard during the exhibit. I further give my permission to publish photographs taken of my original fiber art postcard for editorial, advertising, commercial, educational or display purposes.

I understand that there is risk inherent in mailing my fiber art postcard and I release Tohono Chul Park from any liability in the event of damage or loss to my postcard.

Artist's Signature

Date

Mail this Entry Form separately from your postcard!

Mail to: "Wish You Were Here"
Tohono Chul Park
7366 N. Paseo del Norte
Tucson AZ 85704

CHECKLIST:

- Entry Form completely filled out?
- Entry Form signed above and initialed on previous page (re: sales)?
- \$5 entry fee enclosed (check made to "Tohono Chul Park")?
- SASE with sufficient postage enclosed for return of entry?
- Postcard mailed separately, without an envelope?