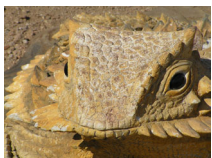


Xeriscape™ Garden



In 1981, the Denver Water Department coined the word "Xeriscape" (from the Greek *xeros* meaning "dry") to refer to a set of seven principles that

would define the concepts of water conservation-oriented landscaping. "Xeriscape" does not refer to a specific look, or even a specific group of plants, but rather an approach to landscaping in arid or semiarid climates. Where water is scarce and soil conditions challenging, landscapes do not have to be limited to a few prickly plants and a yard full of gravel – in fact, a water-saving Xeriscape™ can incorporate a wide variety of native and arid-adapted plants in exciting combinations. The overall intent of the Desert Living Courtyard is to demonstrate just how diverse "xeriscape" can be and in this classic garden vignette, the seven principles of Xeriscape are easy to follow:

#1 – *planning and design* – Every landscape should start with a site plan outlining the areas that get the most sun or wind, which way the ground slopes, and the intended use of the space. Good xeriscape planning makes use of overlapping "hydro-zones" with differing water requirements. Zone 1 or the Oasis Zone describes the area closest to the house. This is the place for higher water use plants that will provide shade and a

cooling effect for outdoor living areas such as the patio or the entry. Remember to group plants with similar water needs. Zone 2 or the Transition Zone extends beyond the Oasis and includes those plants with moderate water needs like ground covers, shrubs, and some trees. The third and final zone, the Desert Zone, extends the furthest from the house and is considered the most xeric, requiring little or no supplemental irrigation.

#2 – *use of low-water use and drought-tolerant plants* – Select a plant palette that makes use of both native and arid-adapted specimens. Don't be limited; search out little-used, but appropriate plants by visiting local, independent nurseries.

#3 – *limited turf areas* – If a lawn is included in the landscape design, make it a part of the oasis zone and size it appropriately for its function, whether as a play area for children, or pets. Consider low-water use turf like false grama grass, buffalo grass, curly mesquite (*Hilaria belangeri*), or

Cathasticum or even a drought-tolerant ground cover like *Lantana montevidensis* or *Calylophus hartwegii*.

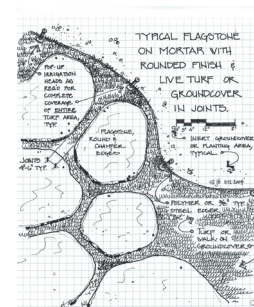
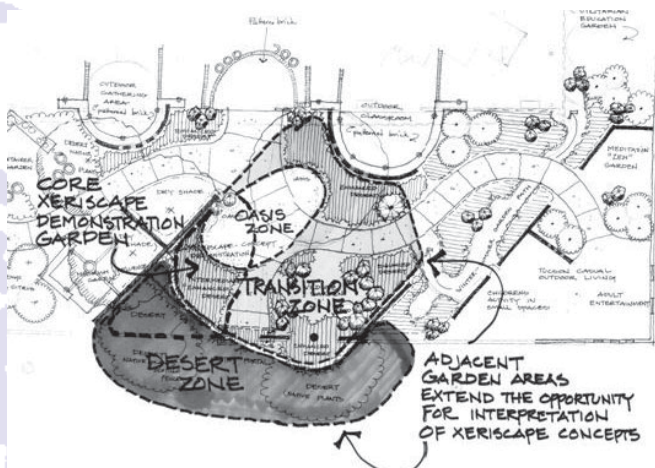
#4 – *water harvesting* – Free water can be found running off roofs and pavement during storm events. To help reduce the need for supplemental irrigation, locate plants where they can take advantage of this runoff, channel runoff by sloping sidewalks and driveways or by contouring the landscape and constructing berms and holding basins, or install gutters and collect roof run-off

in a cistern. Again, this kind of planning needs to be done as part of the original design.

#5 – *efficient irrigation* – Irrigation should be appropriate to the needs of each plant. The most water efficient method is drip irrigation, applying water directly to the roots where it can best be used. Never apply water faster than the soil can absorb it. Remember, too, that a plant's water needs change as it matures. Once established, many native or arid-adapted plants can be taken off drip and provided supplemental water only during periods of prolonged drought. Any irrigation system should be laid out as part of the initial planning phase as it is around this system that the planting plan will be designed. Separate lines/valves should fulfill the needs of the three zones, as each will have different watering needs.

#6 – *improved soil and mulch* – Plants much prefer soil with good drainage; in particular this means breaking up any hidden caliche layers. Mulches of decomposed granite, gravel, river rock, wood bark, or compost will cool the soil, retain moisture, cut down on weeds, and help control erosion.

#7 – *maintenance* – Native and arid-adapted plants may not look like they require much of a gardener, but pruning, fertilizing, weeding and pest control are essential. The irrigation system must also be checked for leaks and timers re-set for seasonal fluctuations in rainfall.



Xeriscape Garden Plant List

Map Location	Botanical Name	Common Name(s)	Typical Height x Width	Landscape Use	Secondary Use	Lowest Water Use	Medium Water Use	Highest Water Use	TCP Greenhouse
Desert Zone									
8	Agave parrasana	Parras agave	3 x 3	SU	A	L			✓
35	Baileya multiradiata	Desert marigold	0.8 x 0.8	P	WF	L	M		✓
55	Carnegieia gigantea	Saguaro cactus	40 x 10	C	A	L			✓
71	Dalea greggii	Trailing indigo bush	1.5 x 6	GC		L	M		✓
89	Ferocactus colvillei	Coville barrel cactus	4 x 1.5	C		L			✓
115	Larrea tridentata	Creosote bush	8 x 8	SH		L			✓
213	Yucca elata	Soaptree yucca	15 x 8	SU	A	L	M		✓
Transition Zone									
8	Agave parrasana	Parras agave	3 x 3	SU	A	L			✓
14	Amoreuxia palmatifida	Summer glory 'Desert Sunrise'	1 x 1	P	WF	L	M		✓
15	Andropogon scoparius	Little bluestem	2 x 2	G	A		M	H	✓
18	Anisacanthus puberulus	Pink forsythia	4 x 6	SH	SH	L	M		✓
19	Anisacanthus thurberi	Desert honeysuckle	3 x 4	P	SH		M	H	✓
20	Antigonon leptopus 'Baja red'	Baja red queenswreath, San Miguelito	20 x 3	V	GC		M	H	✓
35	Baileya multiradiata	Desert marigold	0.8 x 0.8	P	WF	L	M		✓
48	Calliandra californica	Baja fairy duster	6 x 4	SH		L	M		✓
60	Chrysactinea mexicana	Damianita	2 x 2	SH		L	M		✓
71	Dalea greggii	Trailing indigo bush	1.5 x 6	GC		L	M		✓
80	Ericamaria laricifolia	Turpentine bush	2.5 x 4	SH		L	M		✓
89	Ferocactus colvillei	Coville barrel cactus	4 x 1.5	C		L			✓
110	Juniperus deppeana pachyphyla	Alligator bark juniper	30 x 20	T	SH	L	M	H	✓
115	Larrea tridentata	Creosote bush	8 x 8	SH		L			✓
118	Mahonia haematocarpa	Red Algerita	10 x 8	SH			M	H	✓
120	Maurandya grandiflora	Royal snapdragon vine	7 x 7	V		L	M		✓
124	Menodora longiflora	Long-flowered menodora	2 x 2	P	WF				✓
125	Menodora scabra	Rough menodora	2 x 2	SH					✓
139	Penstemon eatonii	Firecracker penstemon	1.5 x 3	P	WF		M		✓
140	Penstemon palmeri	Palmer's penstemon	4 x 1	P	WF		M		✓
142	Penstemon superbus	Superb penstemon	4 x 1.5	P	WF		M		✓
143	Penstemon triflorus	Hill country penstemon	2 x 1	P	WF		M		✓
144	Penstemon spectabilis	Showy penstemon	3 x 1.5	P	WF		M		✓
146	Phylla nudiflora	Frogfruit	0.3 x 6	GC	GT			H	✓

Key

A - accent CN - container GC - groundcover PA - palm T - tree ✓ - generally available in Tohono Chul Park Greenhouse
 B - bulb F - fern GT - grass/turf SU - succulent V - vine
 C - cactus G - grass P - perennial SH - shrub WF - wildflower

Xeriscape Garden Plant List

Map Location	Botanical Name	Common Name(s)	Typical Height x Width	Landscape Use	Secondary Use	Lowest Water Use	Medium Water Use	Highest Water Use	TCP Greenhouse
Oasis Zone									
16	Anemopsis californica	Yerba mansa	0.7 x 6+	GC		M	H		✓
23	Aquilegia chrysantha	Golden columbine	1.5 x 1	P	WF	M	H		✓
38	Bouvardia glaberrima	Bouvardia	3 x 4	SH		M	H		✓
53	Capsicum annuum	Chiltepin	3 x 3	P		M	H		✓
88	Fendlera rupicola	Cliff Fendlerbush	6 x 6	SH					✓
105	Hymenocallis sonorensis	Sonoran spider lily	1 x 1	P	B		H		✓
106	Hymenoxys acaulis	Angelita daisy	0.8 x 1	P	WF	L	M		✓
128	Mirabilis longiflora	Fourth of July four - o'clock	4 x 3	P			M	H	✓
143	Penstemon triflorus	Hill country penstemon	2 x 1	P	WF		M		✓
149	Plumbago scandens	Summer snow	4 x 4	GC	P		M	H	✓
150	Poliomintha incana	Desert rosemary mint	3 x 5	SH		L			✓
156	Quercus oblongifolia	Mexican blue oak	30 x 30	T			M	H	✓
198	Tagetes palmeri (T. lemmoni)	Mountain marigold	4 x 6	P	WF		M	H	✓
199	Tecoma stans angustata	Arizona yellow bells	8 x 8	SH			M	H	✓
200	Tecoma stans 'Gold star'	Gold star trumpet bush	8 x 8	SH			M	H	✓
201	Tecoma stans stans	Trumpet bush	8 x 8	SH			M	H	✓
214	Zauschneria californica	California fuschia	3 x 3	P	GC		M	H	✓

Hardscape

- Flagstone pavers "Sedona Red"
- Freestanding landscape lighting (FX Lighting)
- *Regal Horned Lizard* sculpture by Dave Stone
- *Ants* of recycled railroad spikes by Ned Egen

Key

- | | | | | | |
|------------|----------------|------------------|----------------|-----------------|--|
| A - accent | CN - container | GC - groundcover | PA - palm | T - tree | ✓ - generally available in Tohono Chul Park Greenhouse |
| B - bulb | F - fern | GT - grass/turf | SU - succulent | V - vine | |
| C - cactus | G - grass | P - perennial | SH - shrub | WF - wildflower | |

